

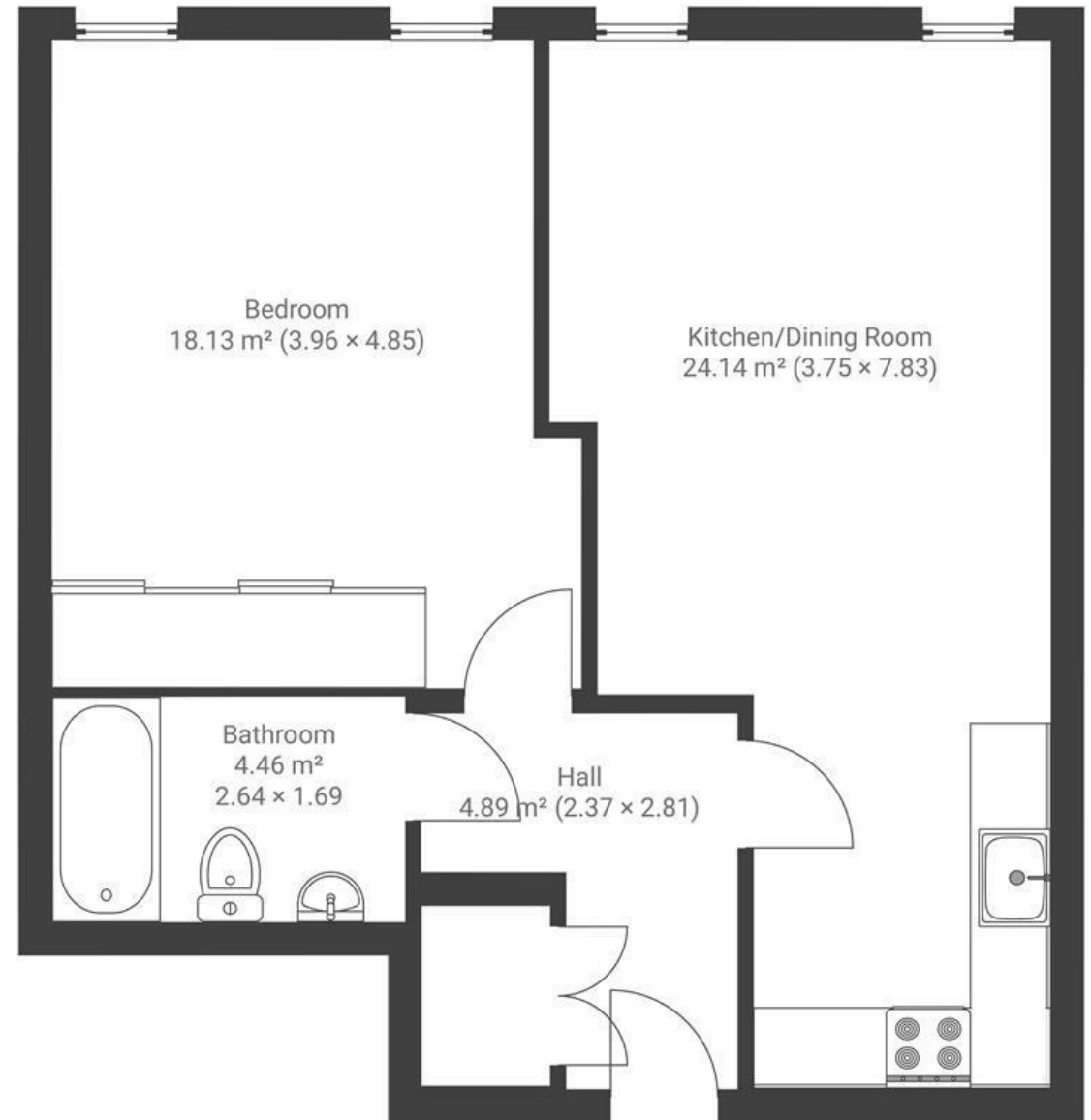
Consort House

BEDMINSTER

APPROXIMATE FLOOR AREA
52.8 SQM / 568 SQFT



2nd Floor



Boardwalk

East Street

BEDMINSTER, BRISTOL



£275,000



1 Bedrooms



Bristol, BS3



1 Bathrooms

1FTH

"We have loved our time living in Consort House. The combination of the charming converted tobacco factory and the central location have made it a fantastic place to live. Visitors always comment on the high quality of the conversion and we take pride in showing the apartment off. The high ceilings, spacious bedroom and living space have made it feel like so much more than just a city flat and we love how cosy it stays in the winter. We have lovely neighbours on all sides and there is a Consort House resident WhatsApp group which makes it an extra friendly place to live."

"On sunny days we have enjoyed taking a stroll to the nearby Victoria Park and relaxing in the communal garden shared by the community of residents at Factory No.1. Having a concierge has been brilliant, not only for collecting deliveries and dealing with queries but also to see a friendly face and have a chat when passing by."

